

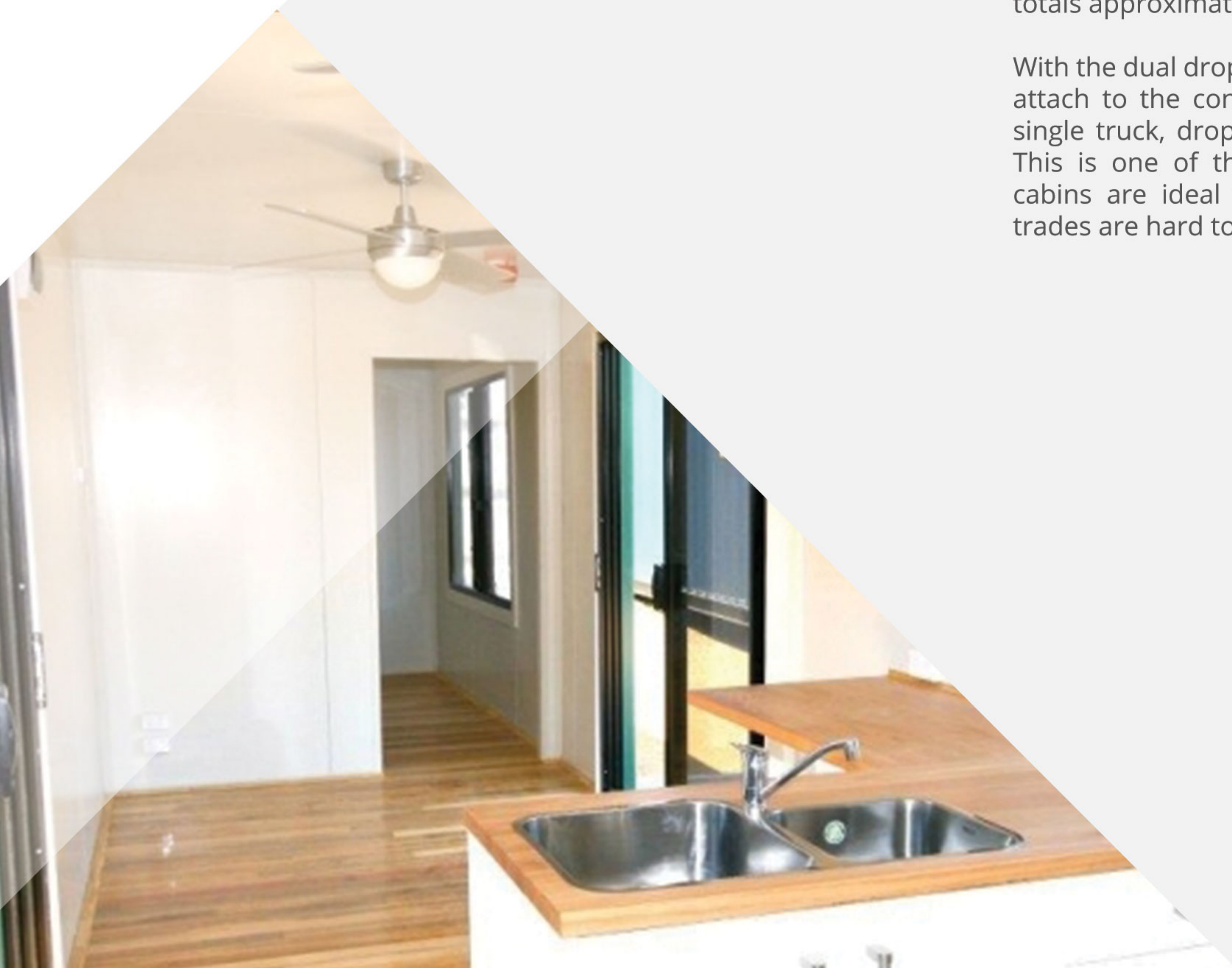


Stingray Cabin 40FT

Our 20FT Stingray Cabin is a fantastic shipping container cabin and our 40FT Stingray Cabin is twice as good.

This is the largest transportable single 40FT container cabin possible. We use a 40ft shipping container which is 12m x 2.4m and the cabin opens up to 7.2m wide with the double retractable balcony modules. This totals approximately 80SQM of total floor space.

With the dual drop down retractable balcony modules attach to the container, it can be transported on a single truck, dropped onsite and balconies lowered. This is one of the reasons our shipping container cabins are ideal for rural living, particularly where trades are hard to get and usually expensive.



Specifications

Stingray 40FT - 12m x 2.4m (7.2m wide with both decks down) this container cabin is approximately 80SQM with both drop down decks.

Container spec:

Recycled high cube shipping container.

Reinforced 100mm x 50mmx2mm window and door cutouts.

Stitch weld on all external openings.

Insulation:

50mm EPS internal wall and ceiling insulation.

Floor:

Kardean vinyl plank flooring.

Electrical components:

Smoke alarm.

Electrical fit out.

4 double power points.

6 LED downlights.

Internal sub board.

external junction box.

Kitchen:

Laminate bench top.

Kitchen cabinetry.

Stainless steel kick.

Double sink.

Swivel tap mixer.

Windows/Doors:

Bed - 1200mmx12mm sliding window.

Living - 600mmx1200mm kitchen window.

X2 2100mmx1800mm sliding doors.

Bathroom - 900mmx600mm obscure glass sliding window.

Internals:

Colorbond window and door internal trim.

Bathroom:

Tiled floor with tile band.

Dual flush toilet.

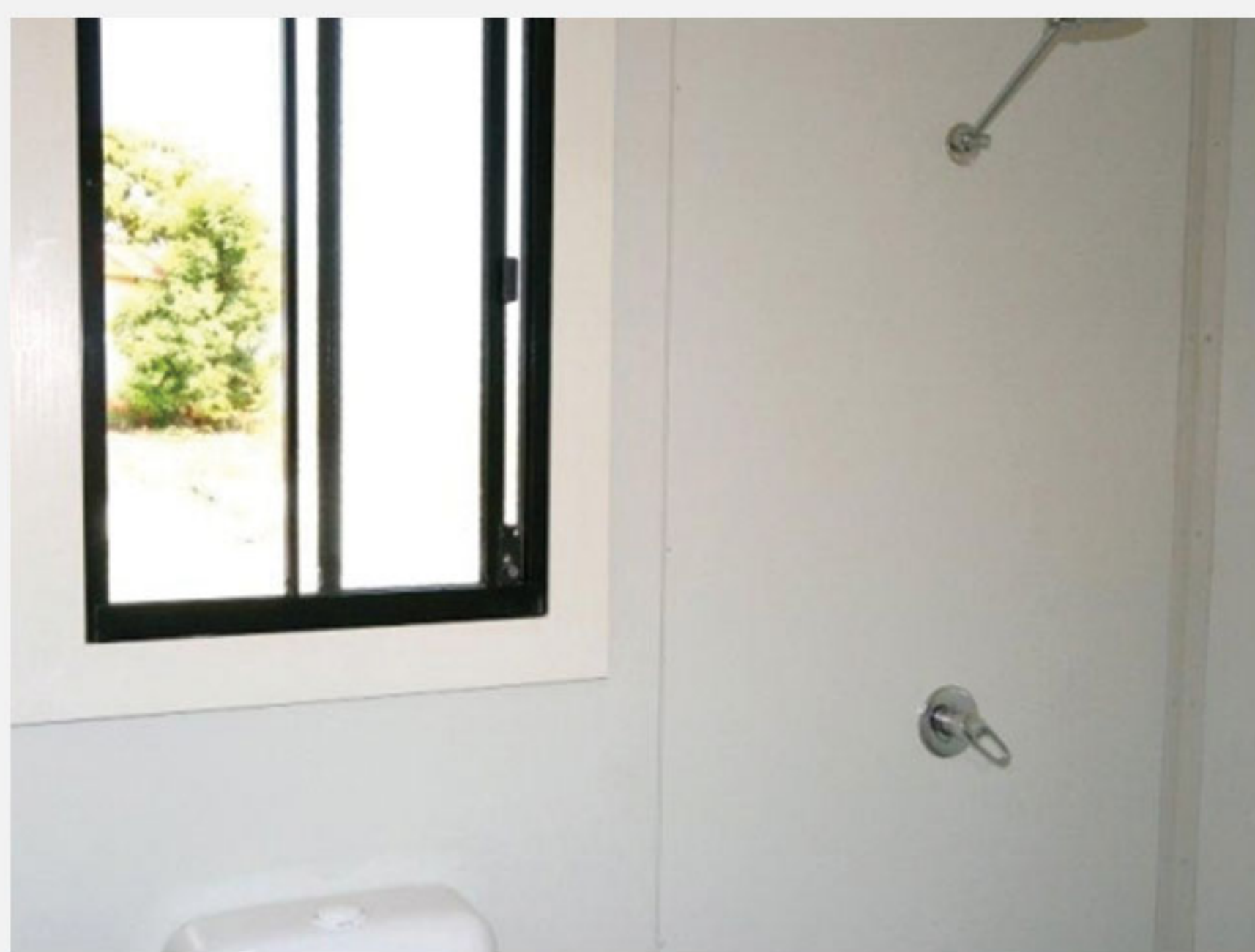
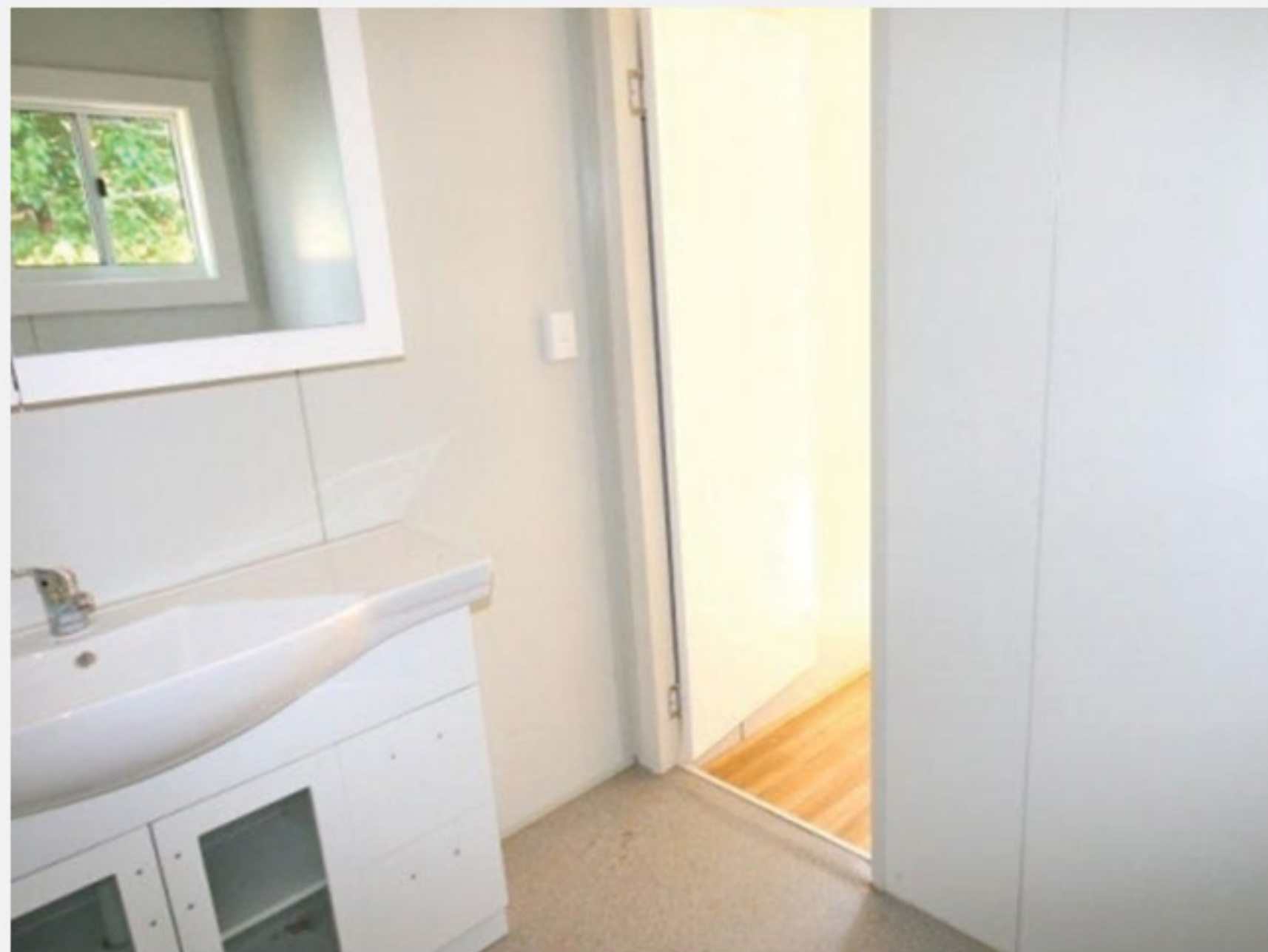
Shower base.

shower head.

We custom build our cabins and many additional options and finishes are available.



Gallery



Shipping

Shipping containers are the most cost effective building to transport. We supply nationwide and have transport depots across the country.

We also hold a rail license which enable us to transport to your closest rail depot, to save huge amounts in transport costs.

For example: We can transport a 20FT cabin from Brisbane to Sydney for \$256.00 and from Brisbane to Melbourne for \$560.00 normally to transport these distances the price would exceed \$9,000.

Our company has spent two years redeveloping our building systems to ensure the rail approval and to give the client the most competitive price Australia wide.

All other portable buildings companies can only shift their units on road, which is extremely expensive.

**Please call us now to receive a free quote for transport to your door
1300 965 359.**



Building Process

STEP 1

Building Approval

You will need to ensure you have a building entitlement and ensure access to the site, please ensure you can get the containers onto the site. A local crane company will generally give a free quote to check accessibility. You will also need to have a rough idea of the home that you are after, either one of our standard designs or a custom plan.

STEP 2

Site Survey

In order to complete an accurate set of building plans you will need to organise a site survey and contour plan to be mapped in .dwg format or similar. If you are unable to find a surveyor yourself, we can help you organise it.

STEP 3

Drafting Process

An initial drafting fee is required to start the drafting process. For our standard homes or single story up to 200 sq.m the price is \$7,700 including GST. For 2 story homes up to 300/sq.m the fee is \$9,900 including GST. The drafting fee will cover drafting of plans and Basix or energy assessment. It now also covers soil test (up to \$800) and and engineering allowance to fit your new home to your block. It does not cover council fees or other reports if required such as a site survey, fire or flood reports.

STEP 4

Find a Builder

CBG will offer our builders if they are available, if not, you will need to contact and pick a builder that you are happy with to install your new home, we will liaise with your builder once drafting and engineering is done. Our drafting team will contact and liaise with you to work out all the internal and external features of your new home. We will also organise the soil test to be done for your house site.

STEP 5

Final Design

Once the final design has been confirmed, we then proceed to run the energy rating/BASIX certificate on the building. The engineers will receive a copy of the soil test and plans to design and engineer the footings or supports for your new home.

STEP 6

Final Price

Container Build Group will supply a fixed price contract on the final design and spec to build the containers and will liaise with the builder to get you a price for the install of your new home.

STEP 7

Lodge to Council

We will supply you with the agreed documents and reports, you can combine these with other required documents for council submission.

Most councils will require you to discuss your requirements with a local building certifier, they will also be able to connect you with other services if required. *Refer to drafting form.*

STEP 8

Fabrication

Once the initial 50% of the contract is paid we fabricate the building according to plans and specifications and get your approval either with an on site visit or emailed photos.

STEP 9

Transport

Once approved and the other 50% of CBG's contract is paid, the containers will be ready to leave via your approved transport company.

STEP 10

Installation

Your builder installs the building at your agreed price.

STEP 11

Move In

You move into your brand new container home.