



## Remote Campsite cabin

This model is a high cube 40FT container split into 4 private bedrooms. It is perfect for a remote campsite without sacrificing comfortable sleeping conditions or privacy. The cabin gives flexibility to each remote worksite as more sleeping cabins can be added.

Container build group can also custom build container units like remote commercial kitchens, site offices, recreation rooms and ablution blocks, all built within shipping containers and delivered to the site as required.

The standard campsite cabin has four separate access bedrooms, each with enough space to fit a single bed or a bunk bed, a sitting bench and small wardrobe. The container cabin is fully insulated and each separate bedroom comes with one large sliding window with aluminium frame and door..





The dimensions of each room are 2.2m x 2.9m with the total length of the remote campsite cabin being 12.2m long and 2.4 meters wide, approximately 30 square meters.

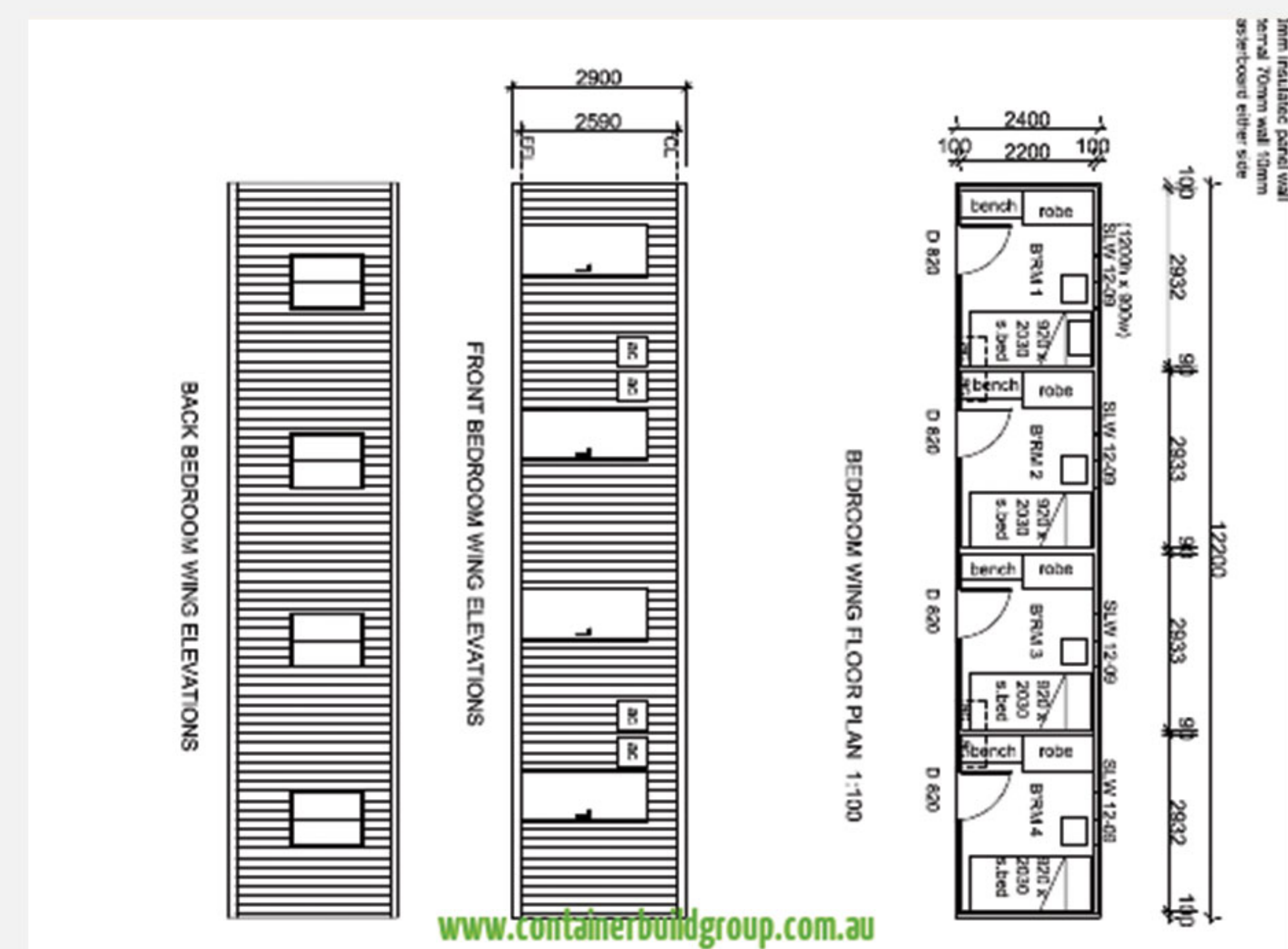
Because we custom make each container cabin in our Australian workshop we are able to design and build the cabins for your exact requirements. You can choose to have only one or two bedrooms and use the rest of the space for the bathroom, kitchen or lounge area.

Our remote campsite cabins are secure and we offer upgrades for those remotes sites which are particularly prone to vandalism and theft. Apart from the standard locks, hinged steel safety screens can be installed on the windows, these can be opened when in use and locked closed when your team are away from site.

Remote locations are almost impossible to access services so we have designed this cabin to simply run off a small generator or we can add a built in plug and go RPC off grid solar unit.

The shipping container cabins are built in our factory and are easily transported on a train or semi-truck and unloaded with a crane or suitable forklift. The cabins can be built in as little as 3 weeks and fitted onsite in a couple of hours.

We custom build all of our models at our site in Lismore, Australia and we have a wide range of exterior and interior materials available. For further information on a shipping container off grid cabin, give us a call on 1300 965 359 or email us at [sales@containerbuildgroup.com.au](mailto:sales@containerbuildgroup.com.au).





# Gallery



## Shipping

Shipping containers are the most cost effective building to transport. We supply nationwide and have transport depots across the country.

We also hold a rail license which enable us to transport to your closest rail depot, to save huge amounts in transport costs.

*For example: We can transport a 20FT cabin from Brisbane to Sydney for \$256.00 and from Brisbane to Melbourne for \$560.00 normally to transport these distances the price would exceed \$9,000.*

Our company has spent two years redeveloping our building systems to ensure the rail approval and to give the client the most competitive price Australia wide.

All other portable buildings companies can only shift their units on road, which is extremely expensive.

**Please call us now to receive a free quote for transport to your door  
1300 965 359.**



# Building Process

## STEP 1

### Building Approval

You will need to ensure you have a building entitlement and ensure access to the site, please ensure you can get the containers onto the site. A local crane company will generally give a free quote to check accessibility. You will also need to have a rough idea of the home that you are after, either one of our standard designs or a custom plan.

## STEP 2

### Site Survey

In order to complete an accurate set of building plans you will need to organise a site survey and contour plan to be mapped in .dwg format or similar. If you are unable to find a surveyor yourself, we can help you organise it.

## STEP 3

### Drafting Process

An initial drafting fee is required to start the drafting process. For our standard homes or single story up to 200 sq.m the price is \$7,700 including GST. For 2 story homes up to 300/sq.m the fee is \$9,900 including GST. The drafting fee will cover drafting of plans and Basix or energy assessment. It now also covers soil test (up to \$800) and and engineering allowance to fit your new home to your block. It does not cover council fees or other reports if required such as a site survey, fire or flood reports.

## STEP 4

### Find a Builder

CBG will offer our builders if they are available, if not, you will need to contact and pick a builder that you are happy with to install your new home, we will liaise with your builder once drafting and engineering is done. Our drafting team will contact and liaise with you to work out all the internal and external features of your new home. We will also organise the soil test to be done for your house site.

## STEP 5

### Final Design

Once the final design has been confirmed, we then proceed to run the energy rating/BASIX certificate on the building. The engineers will receive a copy of the soil test and plans to design and engineer the footings or supports for your new home.

## STEP 6

### Final Price

Container Build Group will supply a fixed price contract on the final design and spec to build the containers and will liaise with the builder to get you a price for the install of your new home.

## STEP 7

### Lodge to Council

We will supply you with the agreed documents and reports, you can combine these with other required documents for council submission.

Most councils will require you to discuss your requirements with a local building certifier, they will also be able to connect you with other services if required. *Refer to drafting form.*

## STEP 8

### Fabrication

Once the initial 50% of the contract is paid we fabricate the building according to plans and specifications and get your approval either with an on site visit or emailed photos.

## STEP 9

### Transport

Once approved and the other 50% of CBG's contract is paid, the containers will be ready to leave via your approved transport company.

## STEP 10

### Installation

Your builder installs the building at your agreed price.

## STEP 11

### Move In

You move into your brand new container home.