



## Rural Container Home

The Rural container home is the first of its kind. Utilizing both container and conventional building methods, we are able to offer any custom layout with large open plan designs.

This design uses 2 40ft containers on one side, conventional build in between and then another 40ft container on the other side. The containers are used as a solid base to build the rest of the building from and can be lined inside and clad on the outside.

With 2 bedrooms, 1 bathroom, kitchen area, dining and living room, this model is perfect for a small to medium family who enjoy a laid back lifestyle with a custom open layout.

The total floor area of the base model is 284 SQM which includes wrap around veranda, big enough for an outdoor furniture set to enjoy a BBQ with friends and family.

The living area can have floor to ceiling sliding doors that completely open up onto the deck. All window and door frames are made from long lasting aluminium and are to Australian standards.





The fabrication of this home is only 3 weeks with a 10 day onsite install. A crane service is hired to help set the containers in any way you wish. Please ensure you provide us with site details to ensure the crane can access the site.

We have a wide variety of exterior and interior finishes for you to choose from and can build this home as a self sustainable off-grid home. There are a wide variety of solutions available and we can incorporate these into your container home, some of the solutions include -

- Solar panels and battery systems
- Composting waste systems
- Wind turbines
- Solar hot water
- Security systems, and
- Power managements systems

### **How much does a Rural container home cost?**

Our rural container homes are of the highest standards. We understand the need for value driven homes while not impeding the quality of the building, we always strive for excellence, providing sustainable building methods while ensuring the value of a new home is maximised. We are value driven and always ensure our clients benefit from our buying power on building materials.

At CBG we genuinely offer the best price, service and product available.

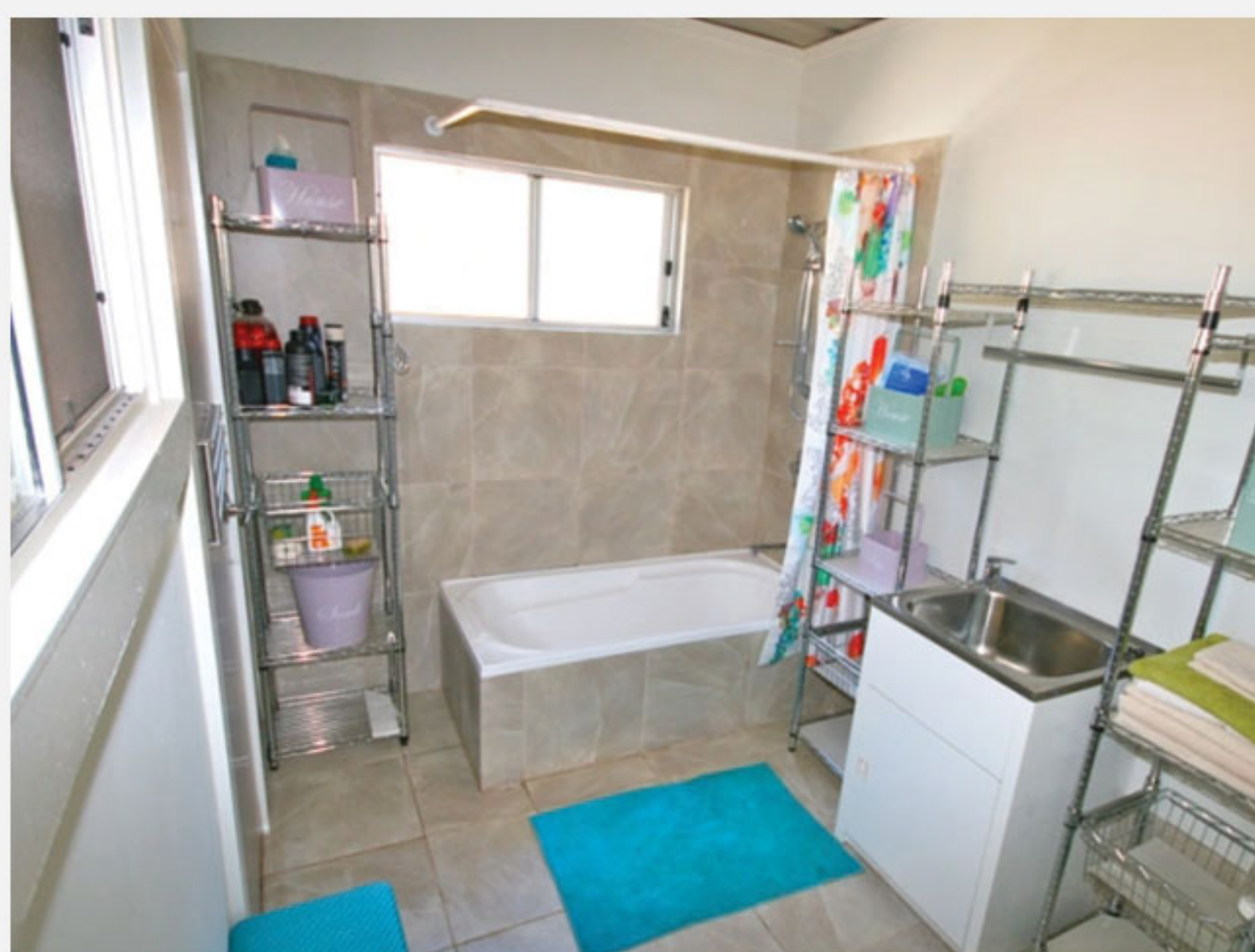
Call us on 1300965359 or send us an email at [sales@containerbuildgroup.com.au](mailto:sales@containerbuildgroup.com.au) so we can go over your requirements and give you an accurate quote.

The Rural shipping container home is a smart choice for people who want a strong, unique and beautiful home without going unnecessary debt.





# Gallery



## Shipping

Shipping containers are the most cost effective building to transport. We supply nationwide and have transport depots across the country.

We also hold a rail license which enable us to transport to your closest rail depot, to save huge amounts in transport costs.

*For example: We can transport a 20FT cabin from Brisbane to Sydney for \$256.00 and from Brisbane to Melbourne for \$560.00 normally to transport these distances the price would exceed \$9,000.*

Our company has spent two years redeveloping our building systems to ensure the rail approval and to give the client the most competitive price Australia wide.

All other portable buildings companies can only shift their units on road, which is extremely expensive.

**Please call us now to receive a free quote for transport to your door  
1300 965 359.**



# Building Process

## STEP 1

### Building Approval

You will need to ensure you have a building entitlement and ensure access to the site, please ensure you can get the containers onto the site. A local crane company will generally give a free quote to check accessibility. You will also need to have a rough idea of the home that you are after, either one of our standard designs or a custom plan.

## STEP 2

### Site Survey

In order to complete an accurate set of building plans you will need to organise a site survey and contour plan to be mapped in .dwg format or similar. If you are unable to find a surveyor yourself, we can help you organise it.

## STEP 3

### Drafting Process

An initial drafting fee is required to start the drafting process. For our standard homes or single story up to 200 sq.m the price is \$7,700 including GST. For 2 story homes up to 300/sq.m the fee is \$9,900 including GST. The drafting fee will cover drafting of plans and Basix or energy assessment. It now also covers soil test (up to \$800) and and engineering allowance to fit your new home to your block. It does not cover council fees or other reports if required such as a site survey, fire or flood reports.

## STEP 4

### Find a Builder

CBG will offer our builders if they are available, if not, you will need to contact and pick a builder that you are happy with to install your new home, we will liaise with your builder once drafting and engineering is done. Our drafting team will contact and liaise with you to work out all the internal and external features of your new home. We will also organise the soil test to be done for your house site.

## STEP 5

### Final Design

Once the final design has been confirmed, we then proceed to run the energy rating/BASIX certificate on the building. The engineers will receive a copy of the soil test and plans to design and engineer the footings or supports for your new home.

## STEP 6

### Final Price

Container Build Group will supply a fixed price contract on the final design and spec to build the containers and will liaise with the builder to get you a price for the install of your new home.

## STEP 7

### Lodge to Council

We will supply you with the agreed documents and reports, you can combine these with other required documents for council submission.

Most councils will require you to discuss your requirements with a local building certifier, they will also be able to connect you with other services if required. *Refer to drafting form.*

## STEP 8

### Fabrication

Once the initial 50% of the contract is paid we fabricate the building according to plans and specifications and get your approval either with an on site visit or emailed photos.

## STEP 9

### Transport

Once approved and the other 50% of CBG's contract is paid, the containers will be ready to leave via your approved transport company.

## STEP 10

### Installation

Your builder installs the building at your agreed price.

## STEP 11

### Move In

You move into your brand new container home.

